



# GAT MONTHLY MEMBERSHIP PROGRESS REPORT

Results as of: 4/30/2021

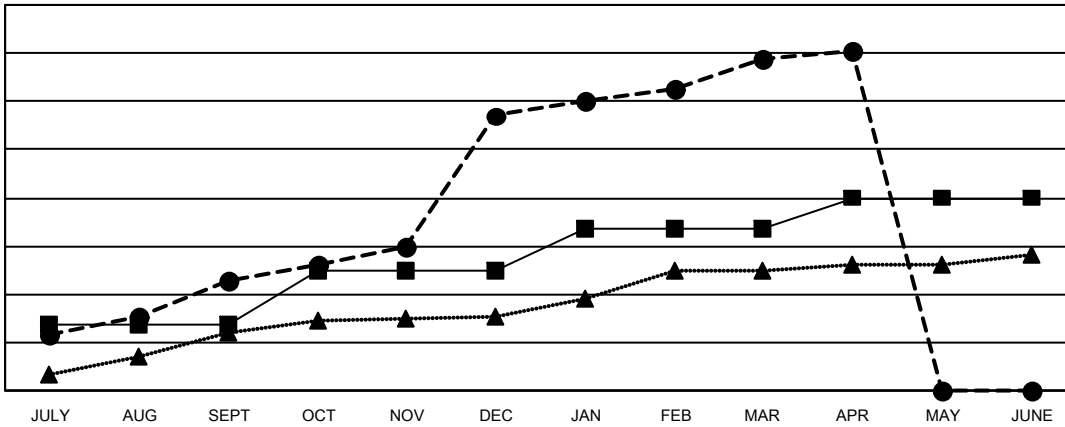
Multiple District 321

LOCATION: INDIA

Clubs			
RESULTS FOR 2020-2021			
QUARTER	NEW CLUB GOAL	NEW CLUBS	DROPPED CLUBS
JULY/AUG/SEPT	27	46	2
OCT/NOV/DEC	23	68	1
JAN/FEB/MAR	17	24	83
APR/MAY/JUNE	13	3	1

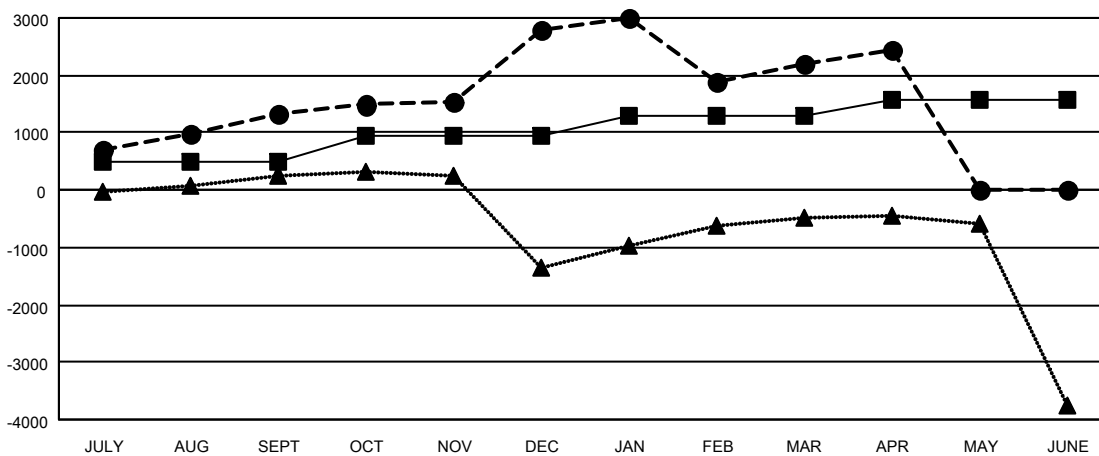
Members			
RESULTS FOR 2020-2021			
QUARTER	MEMBER GROWTH NET GOAL	MEMBER GROWTH ACTUAL	DROPPED MEMBERS ACTUAL (including transfers)
JULY/AUG/SEPT	499	2,251	598
OCT/NOV/DEC	454	3,028	1,466
JAN/FEB/MAR	333	1,274	1,733
APR/MAY/JUNE	272	435	127

GOALS AND ACTUAL NEW CLUBS CUMULATIVE



- - CURRENT YEAR GOALS FOR NEW CLUBS
- - CURRENT YEAR ACTUAL NEW CLUBS
- ▲ - LAST YEAR ACTUAL NEW CLUBS

GOALS AND ACTUAL MEMBERS CUMULATIVE



- - MEMBER GROWTH NET GOAL
- - MEMBER GROWTH ACTUAL
- ▲ - LAST YEAR MEMBERSHIP ACTUAL

**DROPPED CLUBS: 87**

**596 CLUBS OF 1171 ADDED 1 OR MORE NEW MEMBERS**

GENDER DISTRIBUTION	
MALE	22,229 (69.72%)
FEMALE	9,656 (30.28%)

DROPPED MEMBERS	
DECEASED	154
CLUB CANCELLED	1,394
OTHER	2,375
<b>TOTAL</b>	<b>3,923</b>

[CLICK HERE FOR CUMULATIVE MEMBERSHIP DATA](#)

TOTAL FAMILY UNIT MEMBERS	17,783
FAMILY MEMBERS PAYING HALF DUES	10,553